

.2016

*

:

(1082)

² (4.6)

(%51.6)

.

:

. 2014/12/23 :

.2016

. 2013/7/21 :

*

©

The Level of Efficiency of the Open Public Areas in Aqaba

Mothafar Al-Rawashdh

Qasem Al-Dweykat

Abstract

Open public areas are considered the natural environment for practicing entertaining activities and for spending leisure inside them. Therefore, the study aims at determining their efficiency inside the city of Aqaba, through their scope, their geographic distribution and the multiplicity of their services. This has to be done by field survey of open public areas, studying their real situation, and conducting questionnaire of open public areas. The study has come up with a major result which shows that there is a weakness in the open public areas efficiency as a result of the low per capita which amounts to (4.6) sq m out of their total area of (1082) donums. There is no diversity in their offered services, they are mostly limited to the children's games, poor geographical distribution inside the city to the extent that these open areas are not available in some city towns as the old city and shalalah. Moreover, large areas of open public zones are organizationally designated but they are not exploited, and there are areas exploited by other organization with the total rate of (51.9). Upon the pre-mentioned results, the study has come up with some recommendations to participate in the solution of the problem.

Keywords: Efficiency, the Open Public Areas.

(Built Environmental)

(2 2003)

()

) (2.000.000)

:

(244.000)

(2012

-1

-2

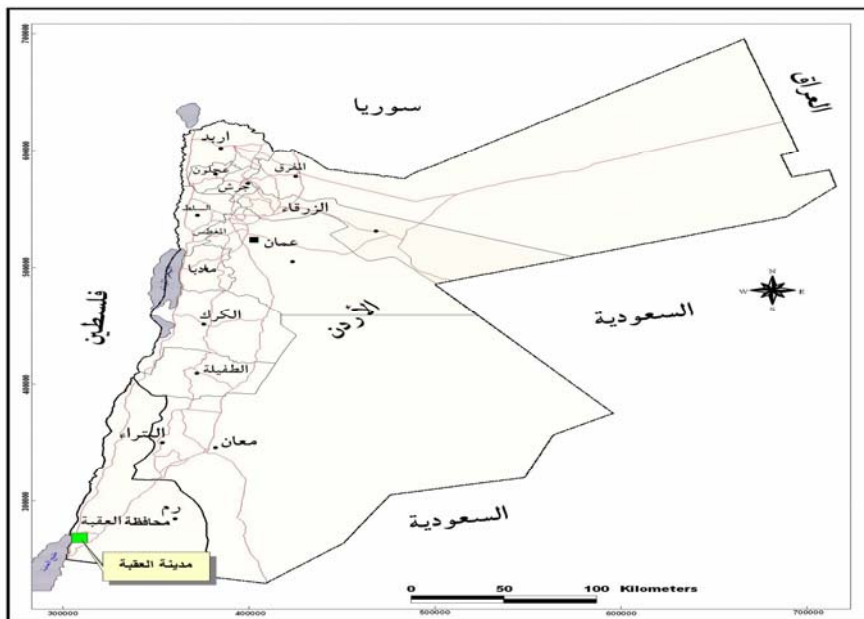
-3

-4

) 29,5 35
² 27 (1
 (2011)² 311.5
) 2000 2 6.008
 .(110 2004

()
 .(223 1999)

(1)



:
 . 2005 (650·000 :1)

(arc view)

m 18

: likert

(3) (4) (5)

(garland r.1991.p 66) (1) (2)

spss

210

228

1000

(240)

/

()

: -1

:

(Goodman,1968, p 185)

:(452 1988)

▪

▪

▪

(122 2010)

: -2

:

-3

()

:

-4

:

-5

:

-6

(ASEZA)

2001

27

.² 311.5

" (1988) -1

² 6.5

.2016

" (2005) -2
"

:

" (2009) -3
:
"

%8

" (2010) -4
"

(GIS)

" (2010) -5
"

" () -6
"

ArcGIS (Arc Info)

(A average Nearest Neighbor)

.()

.2016

" (2004) -7
2000 - 1992 - 1984
"

edrs

microstaion

arc view

%32 1984 %19

2000 %49 1992

(354.183) 2000

) (2012)
. (1

1282
200 2011
1082
514 110 :
() 45
%51.6 559

(2011) %49.4 523
² 10 ² 4.7
. (1) (2009)

(2 1)
:

(Glenn, 1980, p30) ° 2-1

:

.2016

2010

)

(

)

(19

250 120

:

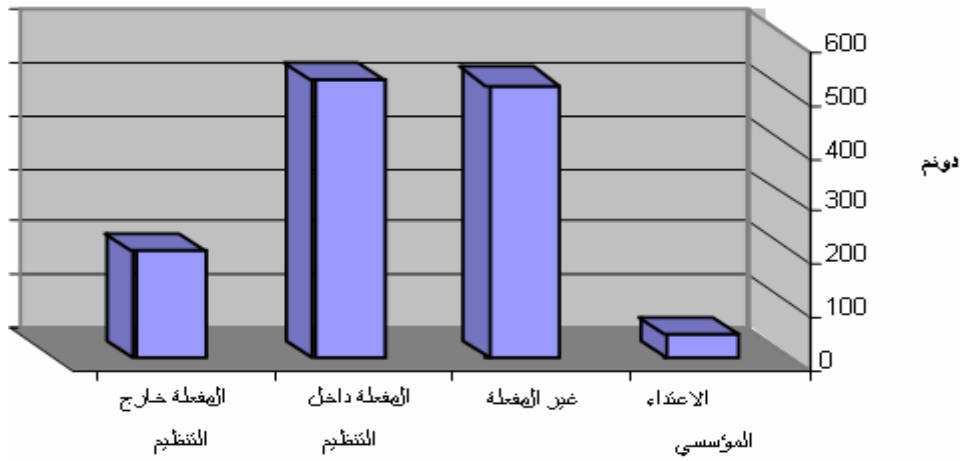
.(2011

)

.(1)

-1-

توزيع المناطق لمفتوحة العامة في مدينة العقبة



(1)

:

(1) (2)

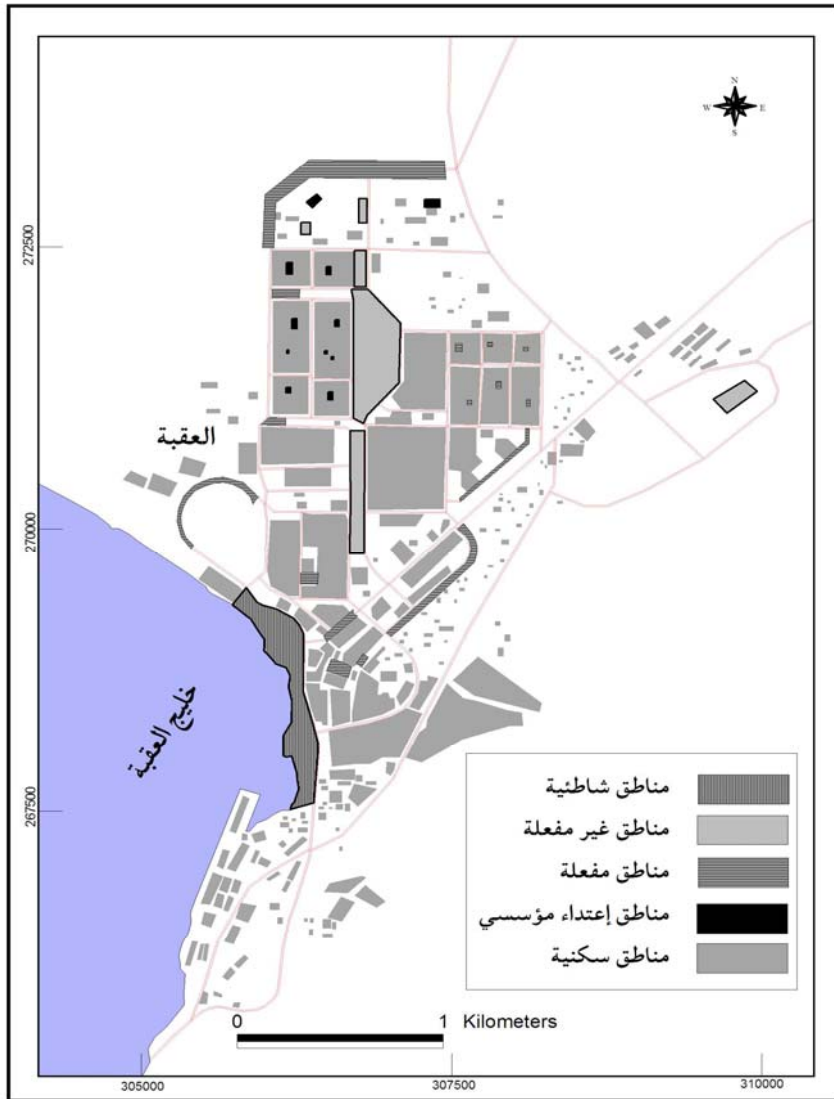
/ (1)

	/ /			
	%75 /	21		1
	%50 /	15		2
		45		3
		10	/	4
		26		5
	/	30	(6)	6
	/	16		7
		364		8
	/5	45	(6)	9
		77	2	10
		7		11
		36		12
		20	1	13
		76		14
		7		15
		10		16
		6		17
		16		18
		16		19
		34		20
		200		21
		110		22
		95	/	23

.2011

:

(2)



.2011

:

:(2)

(2)

2.343	3.55	:
2.093	3.71	:
1.711	3.22	:
1.127	4.25	:

:

(2)

"

"

(1.1)

(4.25)

"

"

.(1.7)

(3.22)

(3.22)

.(4.25)

:
:
.(3)

(3)

:			
1.43	3.532		1
1.412	3.348	()	2
1.322	3.739		3
2.603	3.13		4
1.074	4.106		5
1	4.121		6
1.208	3.787		7
1.338	3.442		8
1.312	3.628		9
1.378	3.014		10
1.473	3.169		11

:

" (6)

(1) (4.12)

" (4)

:

(2.6) (3.13)

■

(6)

. (3.787) (4.121) (7)

■

.(3.34) (3)

² 90

■

(3.53) (3) (1)

. (3.739)

:

-

(13)

"()"

(4.02)

(4)

:			
1.29	3.86	()	12
1.16	4.02	()	13
0.99	3.99		14
1.12	3.83	..)	15
1.24	3.14		16
1.34	3.43	()	17

" (4) (1.24) (16) (3.14) (1.16)

(3.86) (3.99) (4.02) (12) (14) (13)

(15)

(3.43) (3.83) (17)

(27)

:

-

"

(1.07) (4.04)

"

" (21)

. (5) (1.32) (2.26)

(5)

:			
1.29	3.16		18
1.25	2.94		19
1.2	3.12		20
1.32	2.26		21
1.25	2.72		22
1.25	3.01		23
1.09	3.68		24
1.07	3.48		25
1.25	3.22		26
1.07	4.04		27
1.3	3.79		28

:

(5)

(3.22)

:

(523)

.(1)

² (4.7)

▪

)

▪

(

(1 2)

(2.72)

(22)

.

▪

(1)

(2.26 3.16) (21 18)

:

-

"

" (33)

(1.051)

(4.33)

"

" (29)

.(6) (1.107)

(4.19)

(6)

:			
1.107	4.19		29
1.08	4.25		30
1.084	4.21		31
0.986	4.29		32
1.051	4.33		33

:

: (4.25)

▪

(29)

. (4.25) (4.19) (30)

▪

. (4.33) (4.29) (33) (32)

				■
		.(4.21)	(31)	
			:	
			:	
		:		-1
	(² 27)	2012	(110.000)	
			.	
(%49.4)	(523)			-2
² (4.7)				
			.	
			()	-3
		.(4.1)	(45)	-4
)				
	(
				-5
	(514)			
			(%47.5)	
				-6

(250 120)

-7

-8

-9

-10

:

:

-1

()

-2

-3

-4

.....

-5

-6

(2000)

" (2011)

)

"
.(-1) 27 ((2005)

www.egyptarch.net/.../cairogreanstrategie .

(2004)

2000 – 1992 – 1984

(2009)

www.saudigis.org/FCKFiles/File/...2009/.../20_AmalSheikh_KSA.doc

"

" (1988)

2

(1999)

(2010)

:" (2010)

<http://sala-almoustaqbal.com> .

" (2009)

:"

<http://alemarageography.yoo7.com/t95-topic>

" (2003)

(2011)

-1979 -1961

1994

(2012)

(2011)

. 2011 -12 -15

. 2012 -1 -15

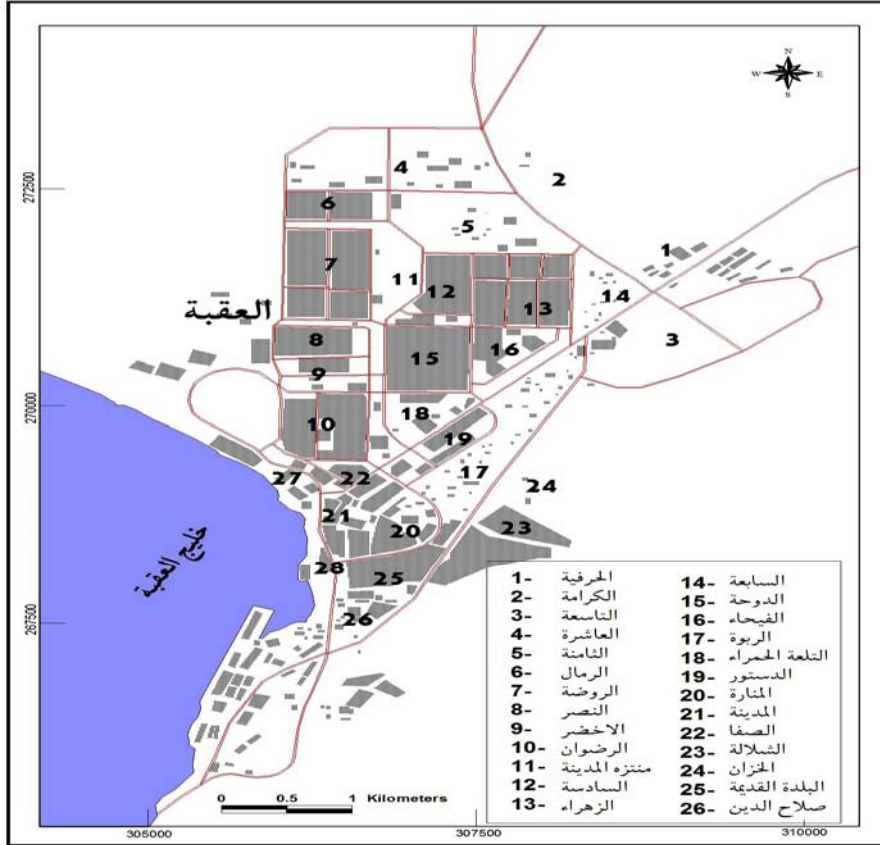
Garland.Ron, (1991), the mid-point on a rating scale: is it desirable?
Marketing Bulletin, vol. 2, New zeyland.

Glenn .T. Trewartha and Lyle. Horn, (1980), An Introduction to
climate,McGraw-Hill, Michigan.

coodman, w.I and freund,E.C.(1968). principle and practice of urban
planning,DC, International city managers, Washington.

:

1



2

:

:

(33)

						:
						1
					()	2
						3
						4
						5
						6
						7
						8
						9
						10
						11
						:
)	12
					(13
)	14
					(15
)	000
						16
					()	17

						:
						18
						19
						20
						21
						22
						23
						24
						25
						26
						27
						28
						:
						29
						30
						31
						32
						33